

# SECHLER PARK LONG-RANGE PLAN: Concept 1

## Key Differences

- Community amenities centrally located
- Additional softball field
- Bridge/river crossing at southwest end of park
- Adding approximately 161 parking stalls:
  - \* Existing: 263
  - \* Proposed: 424



Existing Baseball Field w/ Backstop, Dugouts and Bleachers Pushed in 15' to Bring Home Plate to 45' to Backstop

Existing Parking Lot w/ Improved Circulation + Drop-Off Area (~115 Stalls)

Existing Baseball Field

Additional Parking Lot w/ Drop-Off Area for T-Ball (~50 Stalls)

Existing T-Ball Fields

Bleachers Structure w/ Storage Space + Restrooms Below

New Concessions Building

Plaza Space with String Lights + Other Activities

Existing Baseball Fields (2)

Stormwater Treatment Feature

Playground Area

New Picnic Shelter

Additional Parking Lot for Recreational Amenities (~78 Stalls)

Pickleball Courts (6) w/ Shade Structures

Existing Softball Field

Existing Parking Lot w/ New Drop-Off Area (~84 Stalls)

New Picnic Shelter w/ Nearby Trailhead

Additional Softball Field

Existing Parking Lot (~47 Stalls)

Mill Towns State Trail - Surface Improvements

Existing Softball Field

Additional Parking Lot (~6 Stalls)

Native Planting

New Nature Pavilion w/ Educational Signage

Existing East River Trail System

Additional Parking Lot (~27 Stalls) - Accessible During Winter + Cannon River Access

Xcel Energy Power Line

Drop-Off Area for Water Access

Canoe/Kayak Launch + River Access Opportunities

Pedestrian Bridge to East River Trails

Improved Trail Circulation

Relocated Mountain Bike Skills Area + Pump Track

9-Hole Disc Golf Course

Existing Mountain Biking Trails

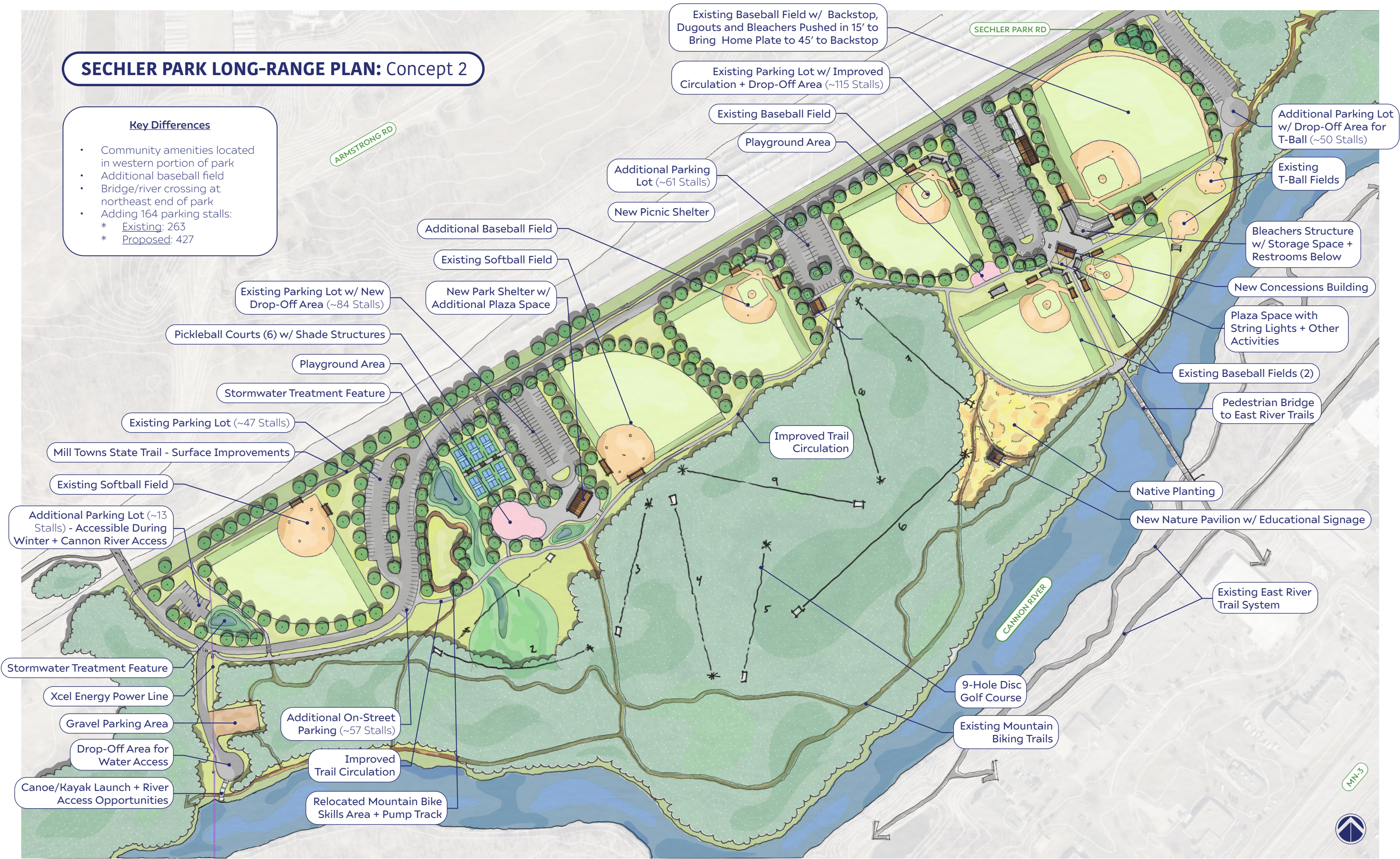
MN-3



# SECHLER PARK LONG-RANGE PLAN: Concept 2

## Key Differences

- Community amenities located in western portion of park
- Additional baseball field
- Bridge/river crossing at northeast end of park
- Adding 164 parking stalls:
  - \* Existing: 263
  - \* Proposed: 427



MN-3



# SECHLER PARK LONG-RANGE PLAN: East Entrance Enlargement



Crosswalk

SECHLER PARK RD

LAUREL CT

Mill Towns State Trail - Surface Improvements

Additional Seasonal Parking (~18 Stalls)

Bike Racks

Plaza Space w/ Mapping + Wayfinding Kiosk

Additional Plaza Space w/ Seat Wall

Seat Wall

Bike Repair Station

Canoe/Kayak Launch w/ River Access Opportunities

Proposed Future Trail Connection

Existing Pedestrian Bridge to East River Trails

MN-3