

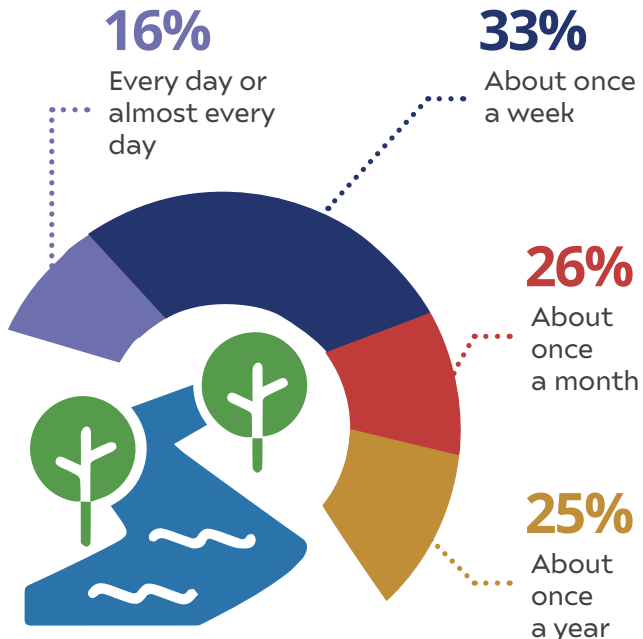
Total survey responses:

152!

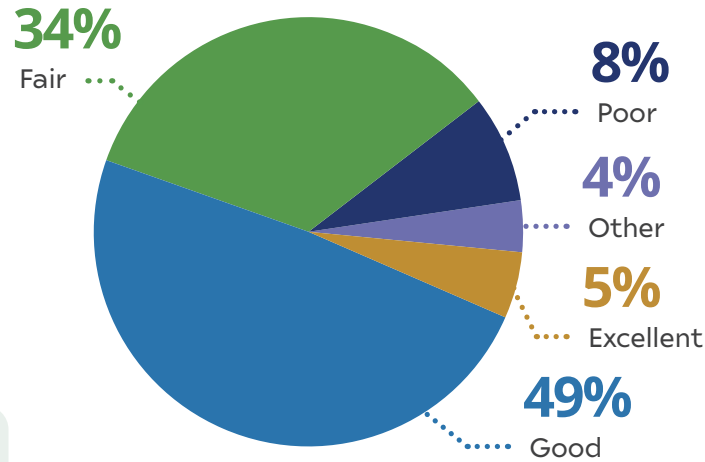


350+ written comments

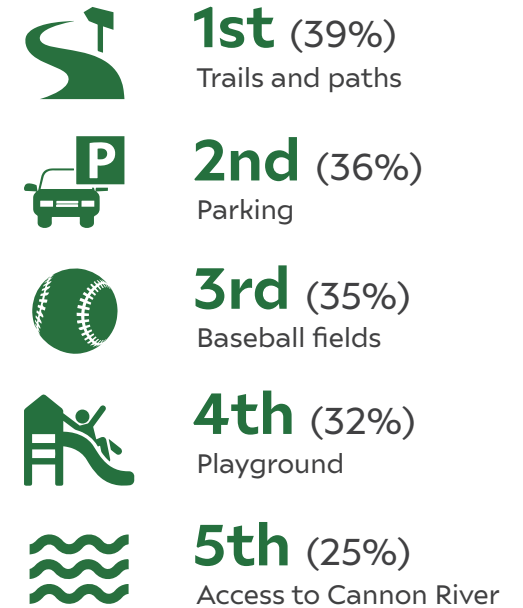
How often people visit Sechler Park:



How would you rate the physical condition of the park + its amenities?



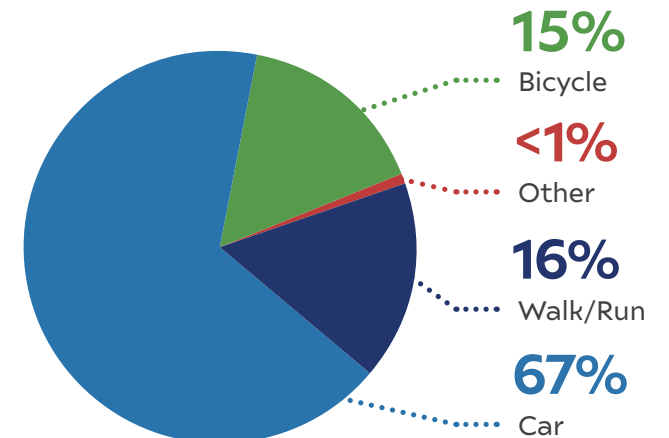
What amenities should be maintained/enhanced?



Top activities to do at ANY park:

- Play pickleball
- Walk/Run/Bike on trails
- Watch or play baseball
- Play on playground equipment
- Walk dogs
- Use shelters/amenities for picnics and gatherings

Top mode of transportation used to get to the park:



Top 5 new amenities for the city to focus on adding to the park:



Pickleball



Splash pad



Winter activities



Additional lighting



Picnic tables

Other popular park features to add:



Native/
Pollinator
plantings



Restroom
facilities



Additional
rental space
(picnic
shelters)



Accessibility
to
amenities

What discourages use?

62%

Amenities available (restrooms, shelters)

31%

Conditions of sidewalks & trails

20%

Conditions of amenities & facilities

19%

Other

12%

Safety concerns

11%

Accessibility concerns

Other key takeaways:

84%

Of respondents support enhancing family-friendly activities and spaces in the park

62%

Of respondents would like to see cultural or other community events programmed in the park

What do you like MOST about Sechler Park?

- Baseball fields
- Green/Open space
- Rural/Undeveloped feeling
- Biking/Walking trails
- Pavilions + shelters
- Proximity to the river

What do you like LEAST about Sechler Park?

- Limited parking amenities
- Lack of actual restrooms
- Location/Proximity to where people live
- Outdated amenities
- Proximity to train tracks
- Small playground
- Lots of bugs