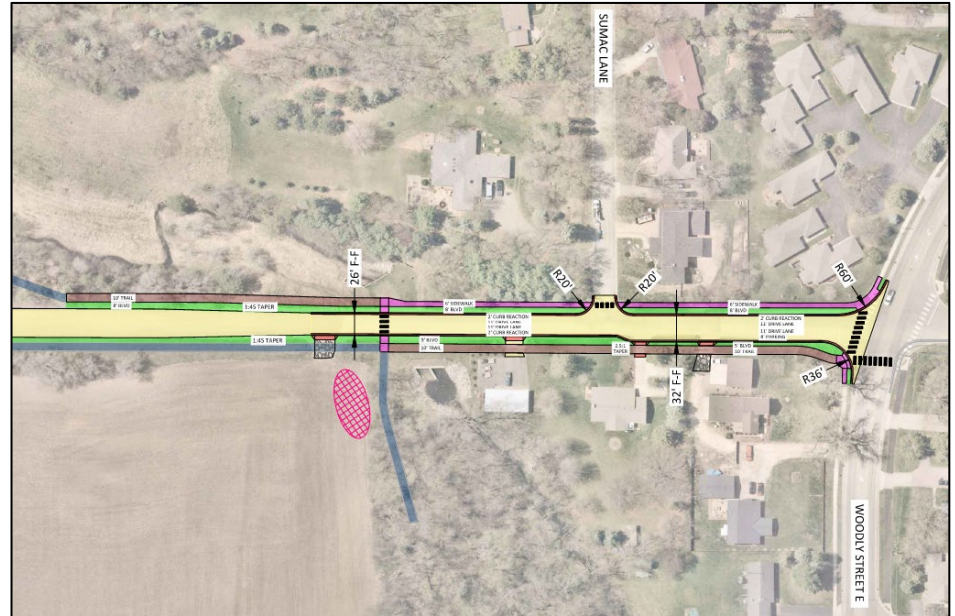


Proposed Improvements



- Mill Towns State Trail and Sidewalk Improvements

- MTST begins on west side of Spring Creek Road from the south
 - Connects to trail being constructed with the 2026 Jefferson Parkway Mill and Overlay Project
- MTST crosses to the east side south of the existing box culvert
- New sidewalks added on west side to connect to Woodley Street

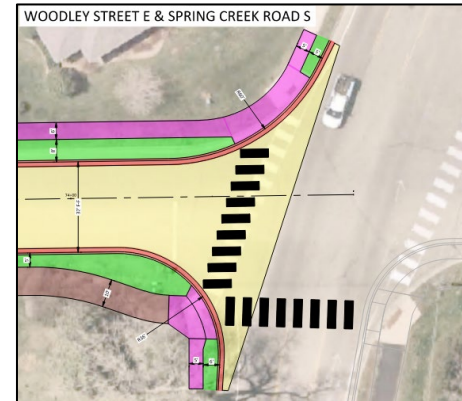
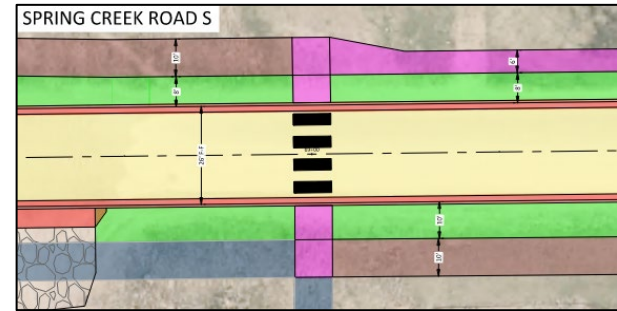


Proposed Improvements



- Intersection and Pedestrian Crossing Improvements

- Enhanced Mid-Block Crossing for MTST
 - RRFB, Pedestrian Ramps, Crosswalk Markings
- Woodley Street
 - Pedestrian Ramps, Crosswalk Markings



Proposed Improvements



- **Woodley Street Traffic Safety and Stop Analysis**

- The study reviewed crash data, sight lines, and vehicle speeds
 - Zero crashes in the last five years
 - Trees, bushes, utility poles, and roadway geometrics adversely affect sight lines
 - 35-mph posted speed limit, 85th percentile speeds between 39 and 43-mph
 - Ideally the 85th percentile speeds match the posted speed limit
- An All-Way stop is not warranted based on traffic volumes and crash data
- Improvements to this intersection are still in development with City and County staff and will be confirmed with Council during the final design phase of the project

